

Quick Start Guide Rev: A

FluidWorker® 150

WALLENIOUS
WATER INNOVATION

SAFETY

Lamp: UV-radiation can instantly harm eyes and skin. Never look into a lit lamp!

Magnetic filter: Strong magnetic fields can cause serious injury or death to people with implanted or attached medical devices, such as pacemakers and prosthetic parts.

INSTALLATION INSTRUCTION

For detailed information refer to the Technical manual, www.fw100.se

- A. Install the tank bracket in the part of the process fluid tank with least amount of particles. Adjust so that the ends of the pipes are kept at a minimum of 50 mm from the fluid tank bottom. The inlet pipe must always be under the lowest fluid level. Adjust the angle of the outlet pipe to create a good circulation.
- B. Install the fluid level sensor in the process fluid tank and adjust the bracket to align the marking with the lowest desired fluid level. Connect the cable attached to the FluidWorker to the fluid level sensor.
- C. Connect the water supply (the included flexible hose must be used), tighten by hand and make sure the water is always turned on.
- D. Fasten the hoses to the inlet and outlet pipes using the included hose clamps.
- E. Connect the concentrate tube and fill the concentrate tank.
- F. Fill the priming tank until it is almost full (<10mm from the top) with water.
- G. Wipe the Concentration Sensor clean with a dry cloth. It is essential that the round glass surface is absolutely clean.
- H. Connect the FluidWorker to mains power and turn on the main switch.

STARTING THE FLUIDWORKER

For detailed information refer to the Technical manual, www.fw100.se

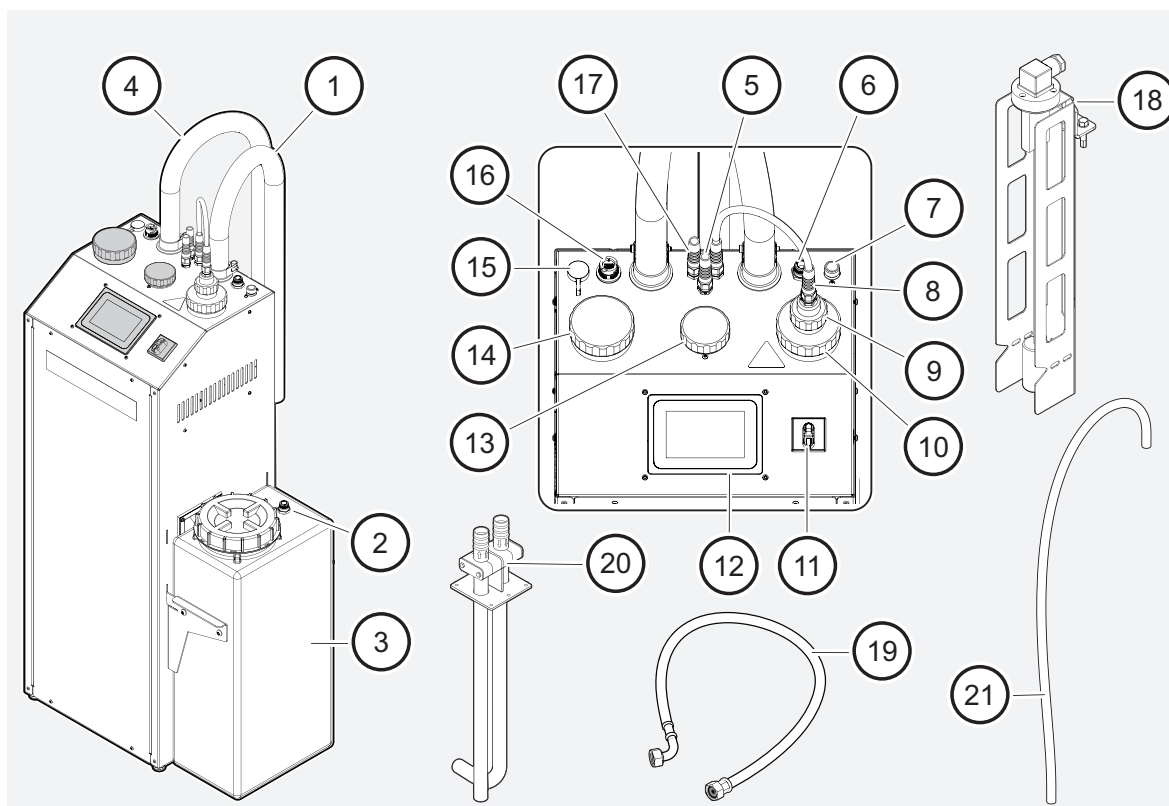
CAUTION: It is important that the entered value for “*Total fluid volume*” is fairly accurate ($\pm 30\%$). Entering the wrong volume may cause flooding of the process fluid tank.

NOTE: Make sure installation points A to H above have been performed.

1. Go to the touch screen “*Settings*” and set your desired value for “*Pump*” and “*Lamp*”.
2. Go to the touch screen “*Concentration 1*” and set your desired “*Setpoint*”.
3. Go to the touch screen “*Concentration 2*” and set:
“*Ref.factor(Brix ->Conc.)*”, “*Concentrate viscosity @40 °C*” and “*Total fluid volume*”.
4. Press the “*START*” button on the touch screen. The following will occur: Pump priming (90s) – Adjust fluid level (0-30min) – Measure concentration (30-40min) – Adjust concentration (0-20min)

FluidWorker® 150

SYSTEM OVERVIEW



Position	Description	Position	Description
1	Outlet hose	12	Touch display. 5" colour touch screen (HMI)
2	Outlet from concentrate tank	13	Concentration sensor
3	Concentrate tank	14	Priming tank including strainer with magnetic filter
4	Inlet hose	15	USB port
5	Cable to fluid level sensor	16	RJ45-port for OPC-UA
6	Concentrate inlet	17	Power cord. Mains 230VAC
7	½" Fresh water inlet	18	Fluid level sensor
8	Lamp power cable	19	6520 Termopar Hose for water supply. To be connected to fresh water inlet (7)
9	Lamp top	20	Bracket
10	Quartz sleeve nut	21	Concentrate tube (delivered inside the concentration tank)
11	Main switch. The main power switch for the FluidWorker 150		